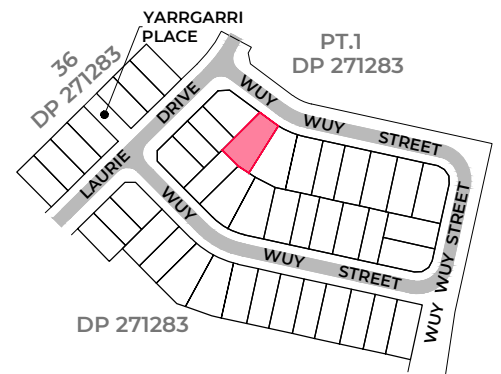
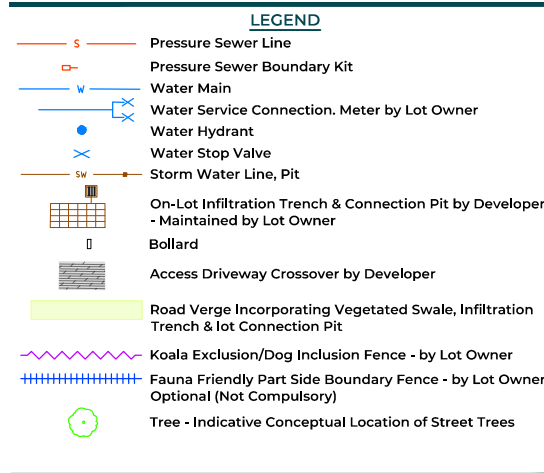


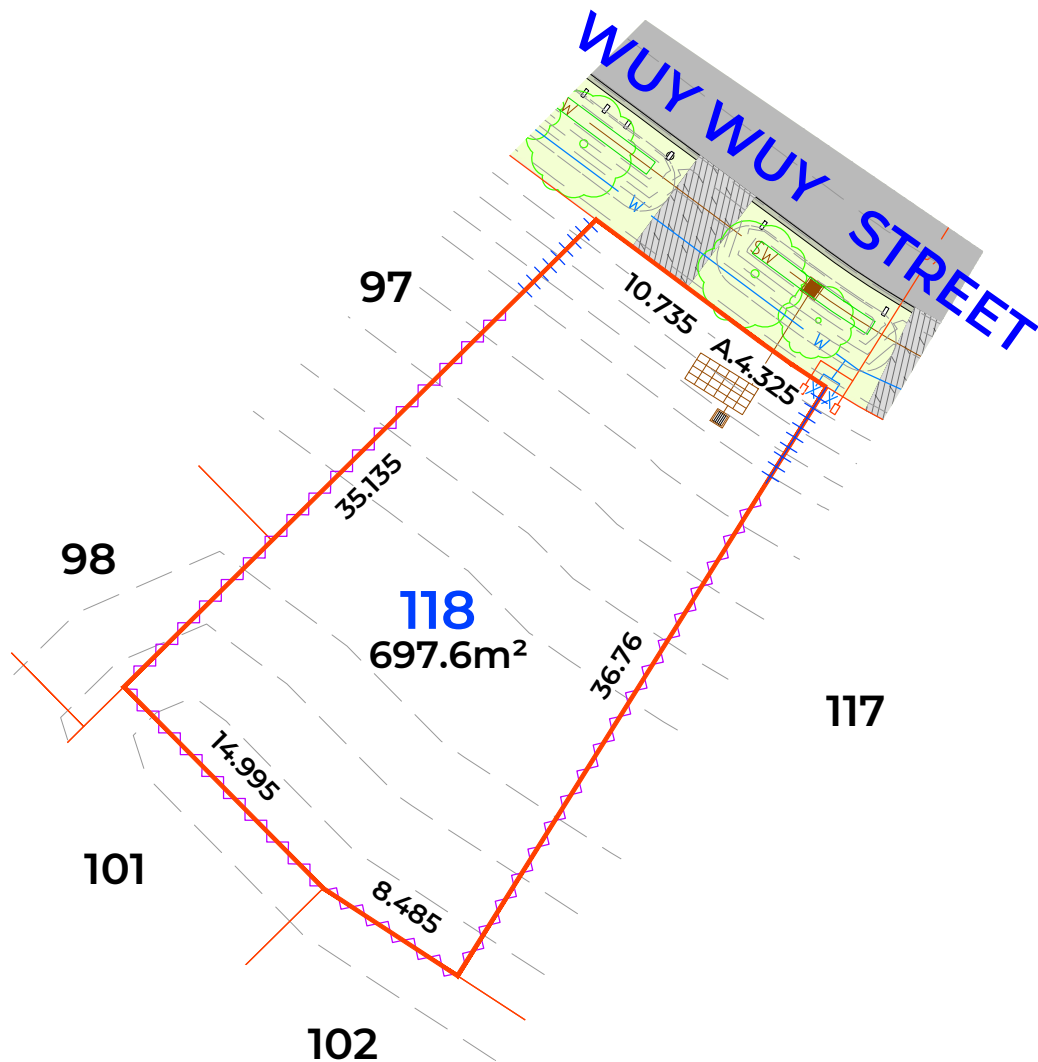


Preliminary Site Analysis Plan

Lot 118, Wuy Wuy Street, Iluka

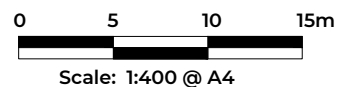


STAGE 3 SITE PLAN



Disclaimer/Notes:

- For information on building a home refer to the "Birrigan Iluka Beach - Design and Landscape and On-Lot Stormwater Maintenance Guidelines".
- Contours where shown are based on design plan information only, subject to construction and Council certification.
- Each Lot to be provided with a utility service including pressure sewer, potable water, electricity and NBN connection points. Utility servicing details where shown are based on design information. Final location is subject to construction and supply authority certification.
- For further survey and information on restriction as to user, positive covenants and easements and the like affecting this Lot, interested parties should refer to the Subdivision Plan and 88B Instrument.
- Bushfire Attack Levels (BAL) subject to separate assessment by a suitably qualified person to be commissioned by Lot Owner.
- Electricity and NBN supplies have not been shown at this time.



Contour Interval: 0.1m

C	Ver	Date	Client Comments	GS	By
13-12-21					

